



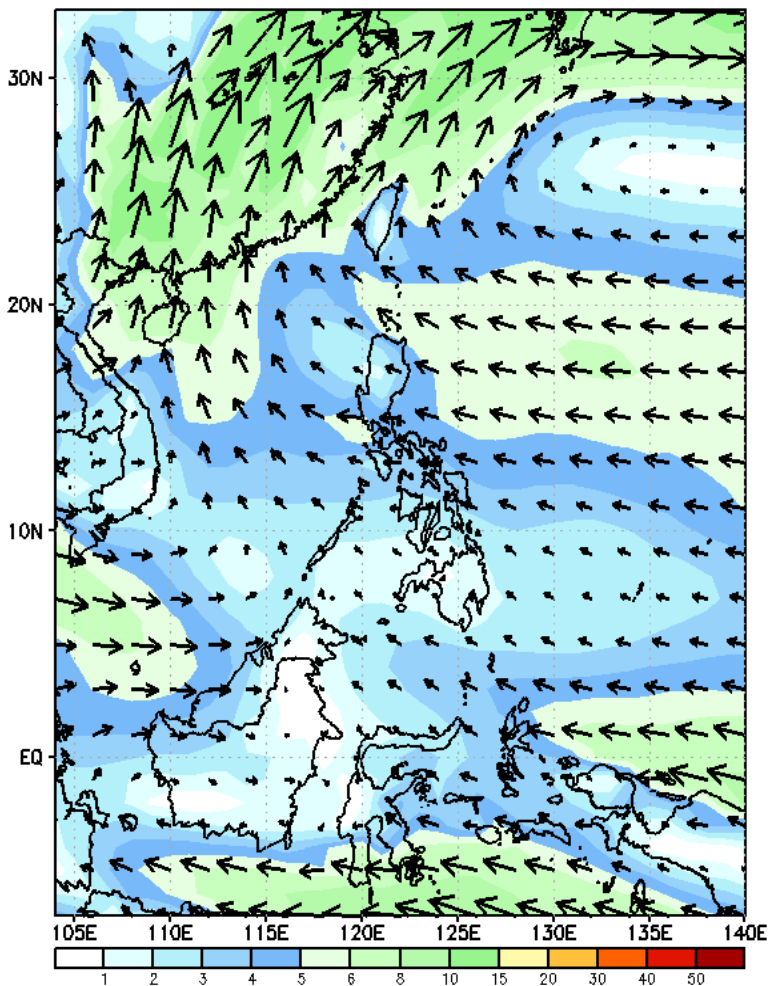
# Week 1 & Week 2 Forecast for the Philippines using GEFS Model



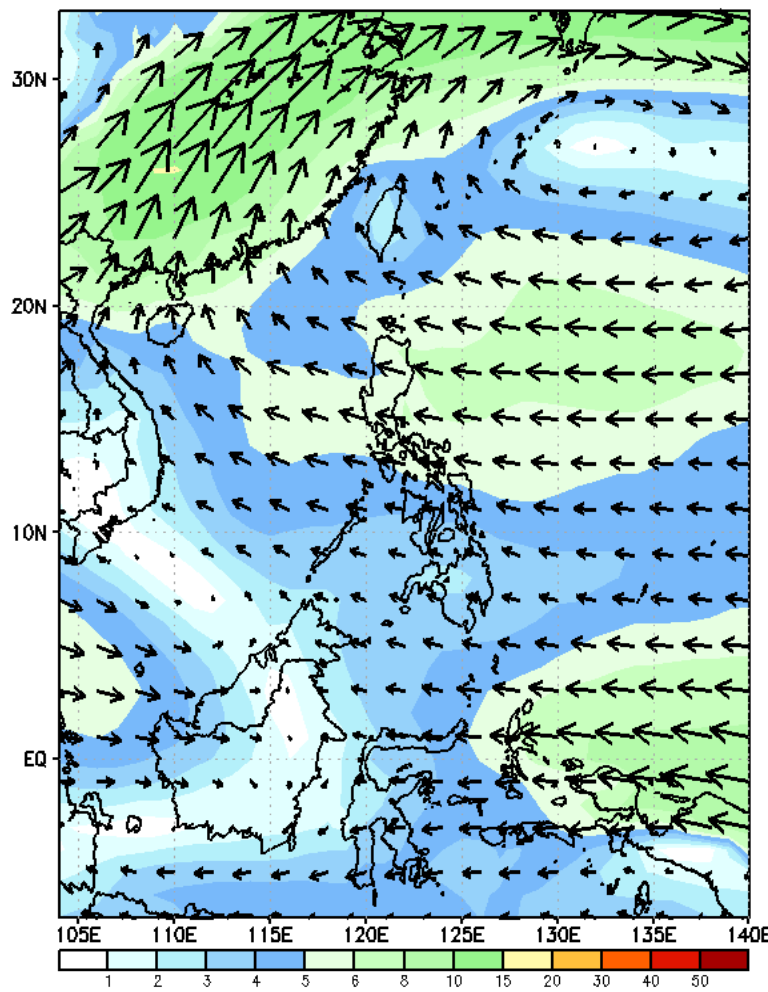
# GEFS Week-1 Wind Forecasts:

Week 1: Jul 01-07, 2024

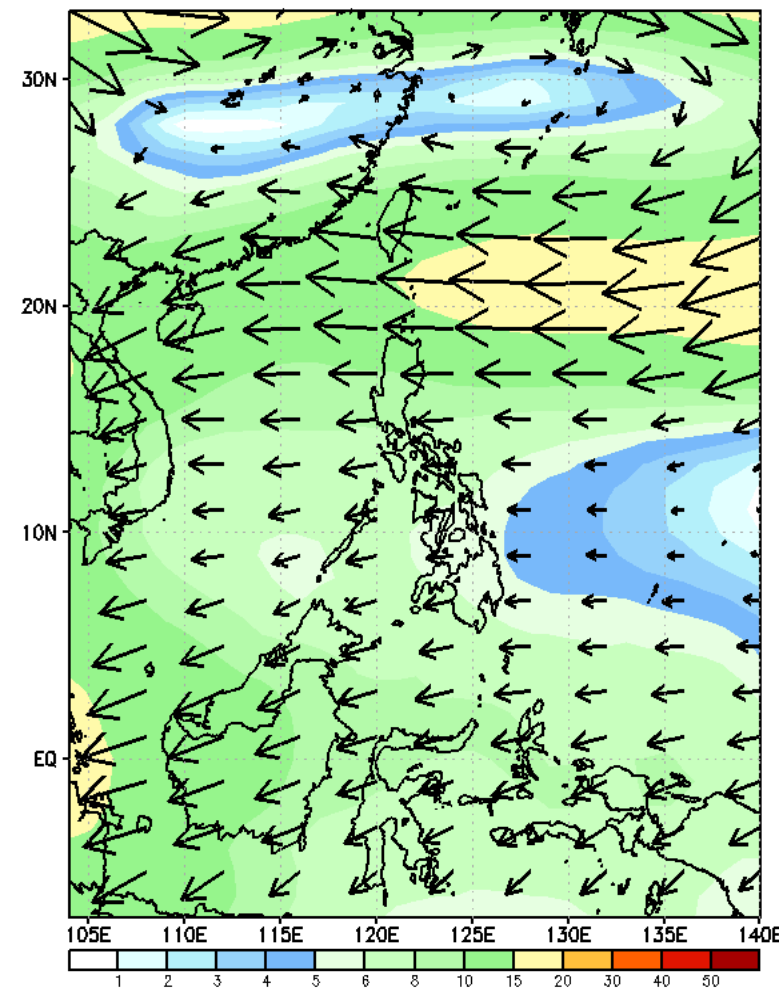
GEFS Week-1 850-hPa Wind Total  
Valid: 20240701 - 20240707



GEFS Week-1 700-hPa Wind Total  
Valid: 20240701 - 20240707

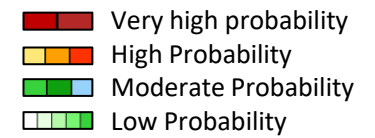


GEFS Week-1 200-hPa Wind Total  
Valid: 20240701 - 20240707



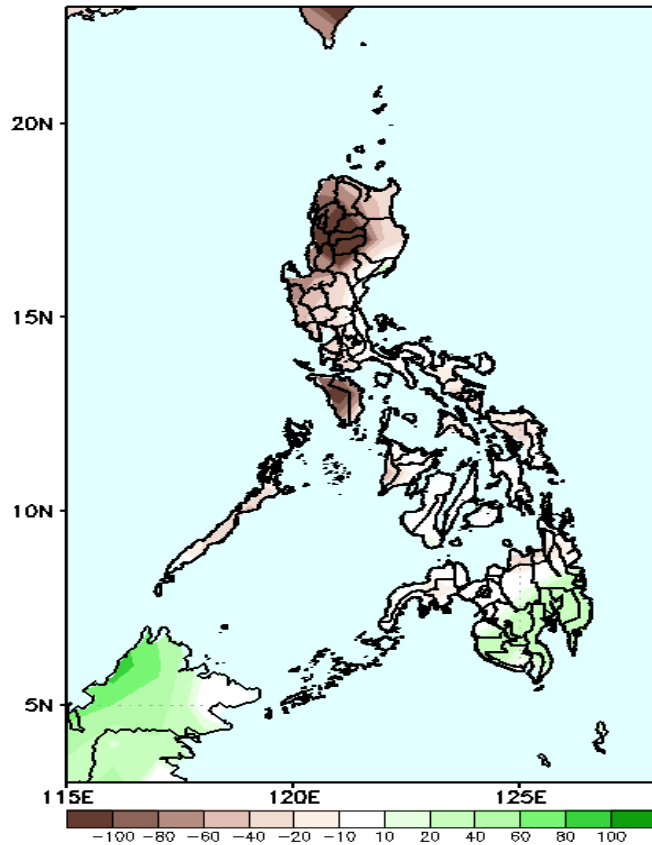
Easterlies affecting most parts of the country during the forecast period.

# Precipitation Anomaly and Exceedance Probability > 25/50 mm



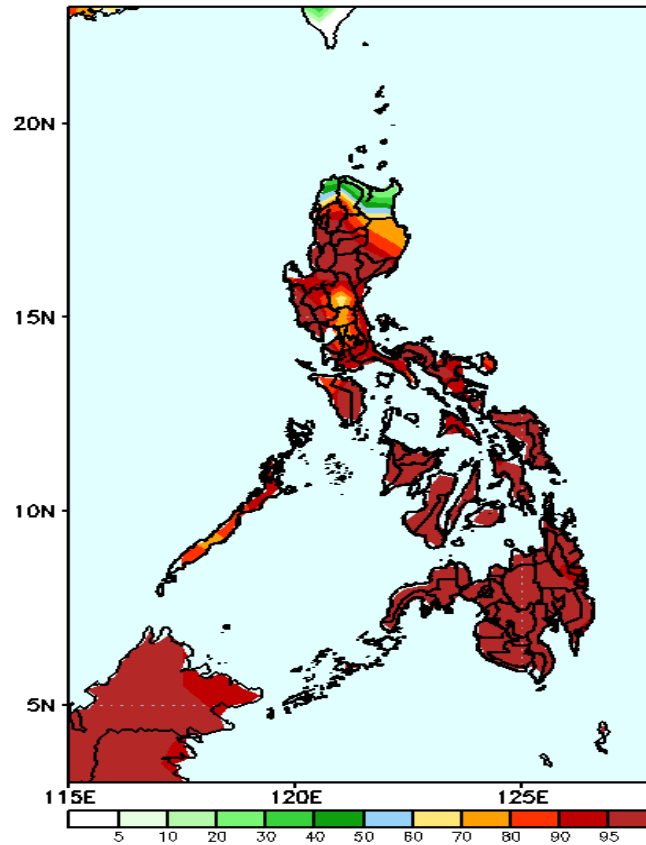
Week 1: Jul 01-07, 2024

GEFS Week-1 Precip Anomaly  
Valid: 20240701 - 20240707



Rainfall deficit of more than 100mm in CAR, Ilocos Sur, and Mindoro; 20-60mm for the rest of Luzon, Visayas, and northern Mindanao while 20-60mm increase of rainfall for the rest of Mindanao .

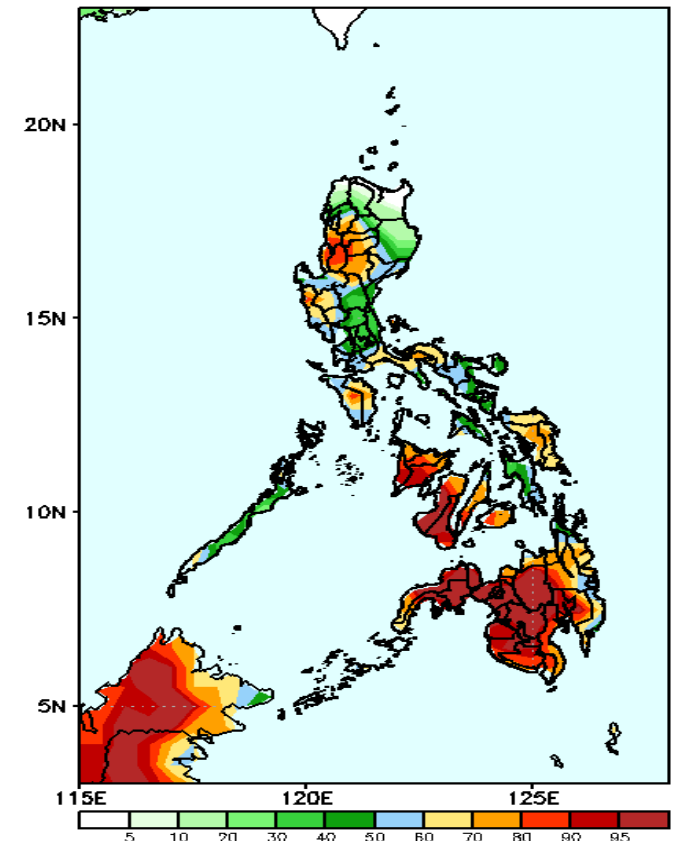
GEFS Week-1 Exceedance Prob. > 25mm  
Valid: 20240701 - 20240707



## Probability to Exceed 25mm

- High to very high over most parts of the country;
- Moderate to high over Ilocos Norte, Apayao and Cagayan;

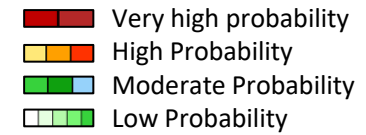
GEFS Week-1 Exceedance Prob. > 50mm  
Valid: 20240701 - 20240707



## Probability to Exceed 50mm

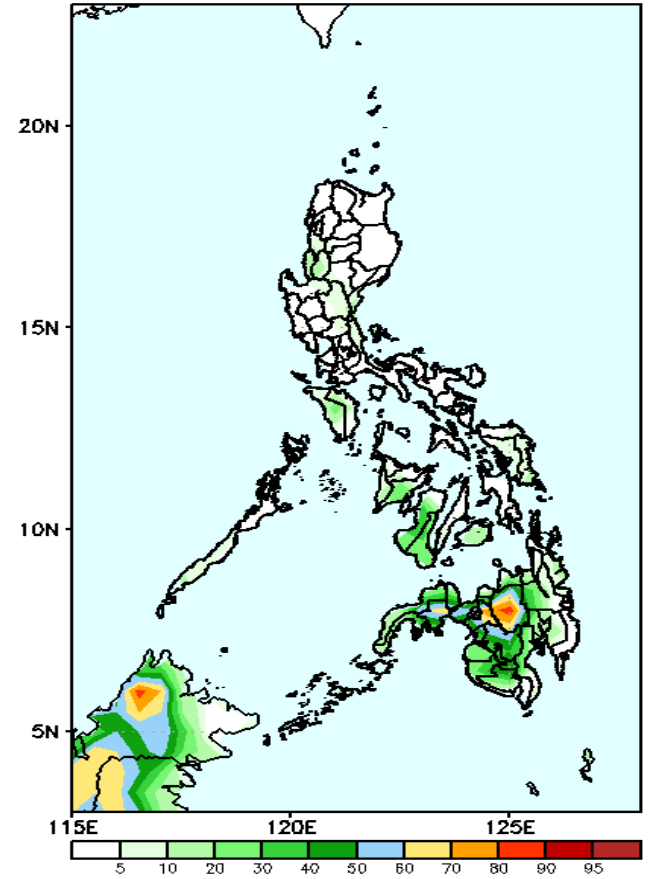
- High to very high over Western Visayas, Negros Region and most parts of Mindanao,;
- Moderate to high over most of Luzon, Visayas, Surigao del Norte and Davao Oriental;
- Low to moderate over Ilocos Norte, Apayao, Cagayan and Isabela.

# Exceedance Probability > 100/150/200 mm



## Week 1: Jul 01-07, 2024

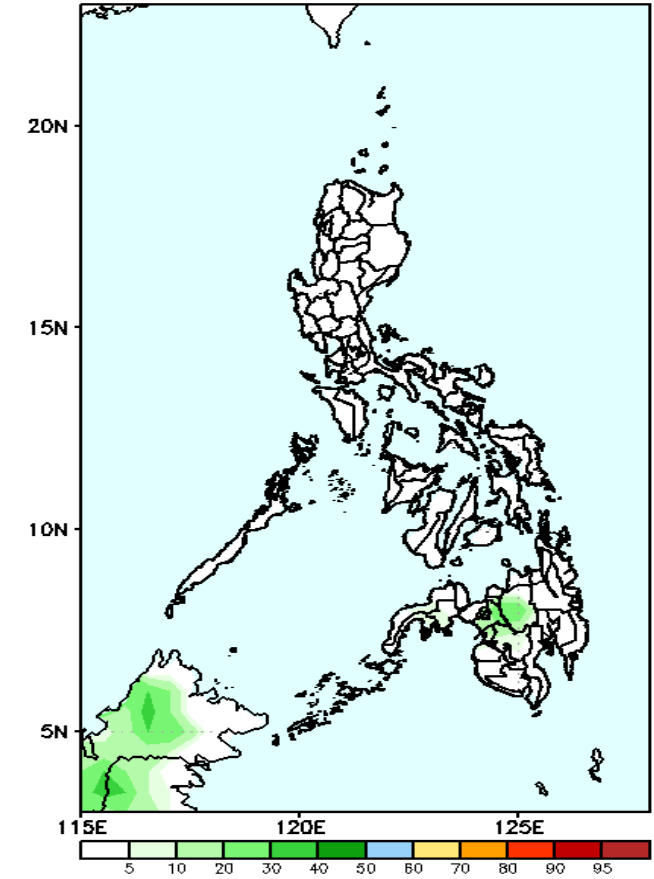
GEFS Week-1 Exceedance Prob. > 100mm  
Valid: 20240701 - 20240707



### Probability to Exceed 100mm

- Moderate to high over Bukidnon and Lanao provinces;
- Low to moderate over the rest of Western Mindanao;
- Low over the rest of the country.

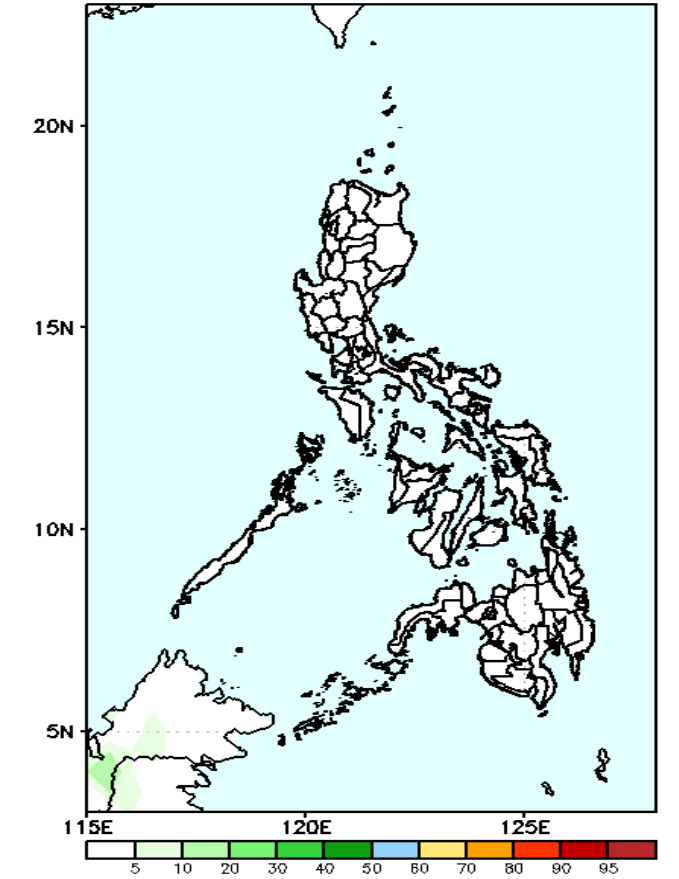
GEFS Week-1 Exceedance Prob. > 150mm  
Valid: 20240701 - 20240707



### Probability to Exceed 150mm

- Low across the country.

GEFS Week-1 Exceedance Prob. > 200mm  
Valid: 20240701 - 20240707



### Probability to Exceed 200mm

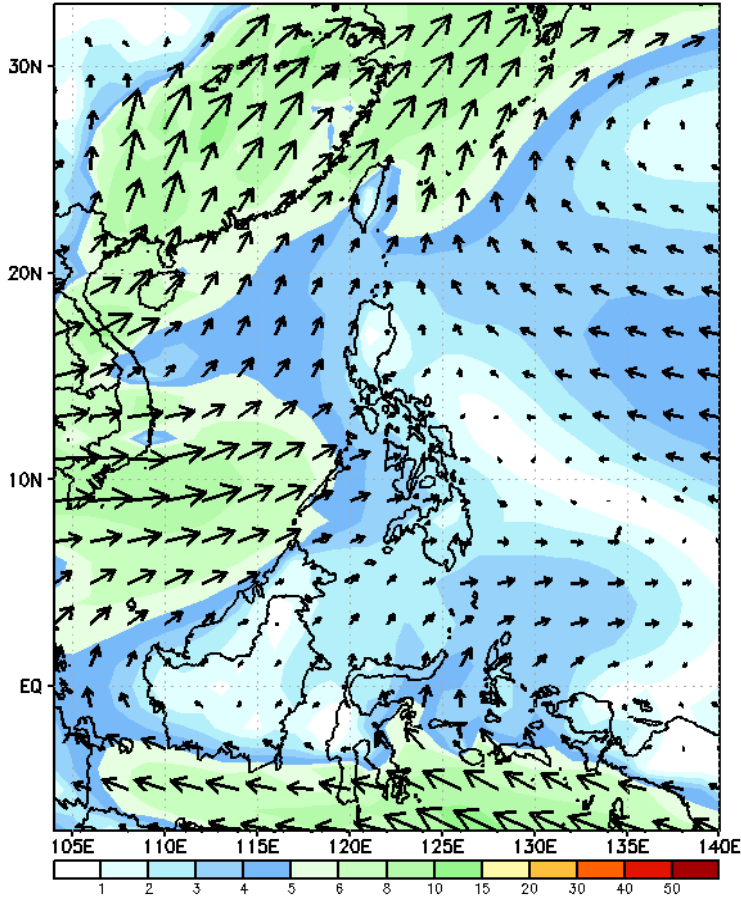
- Low across the country.



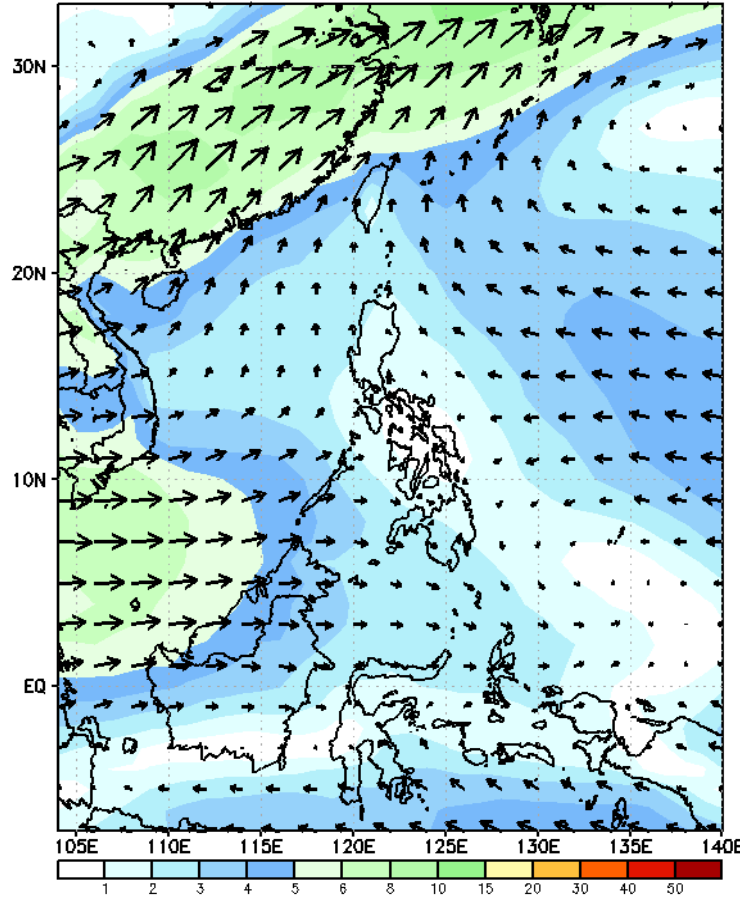
# GEFS Week-2 Wind Forecasts:

Week 2: Jul 08-14, 2024

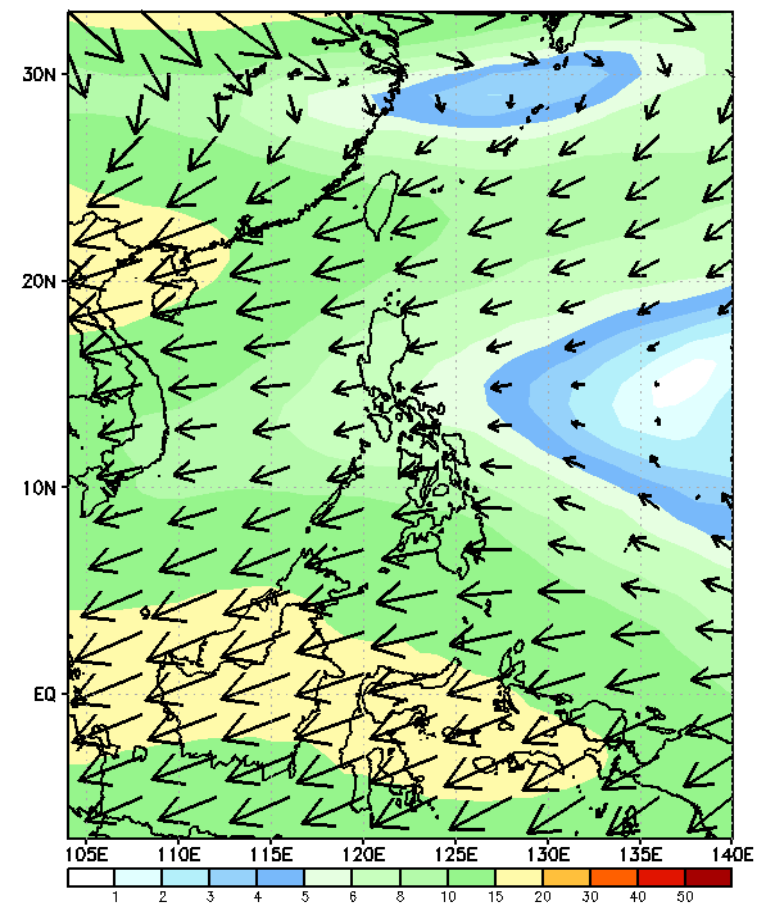
GEFS Week-2 850-hPa Wind Total  
Valid: 20240708 - 20240714



GEFS Week-2 700-hPa Wind Total  
Valid: 20240708 - 20240714

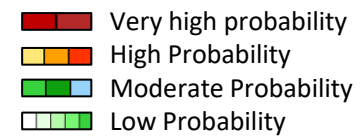


GEFS Week-2 200-hPa Wind Total  
Valid: 20240708 - 20240714



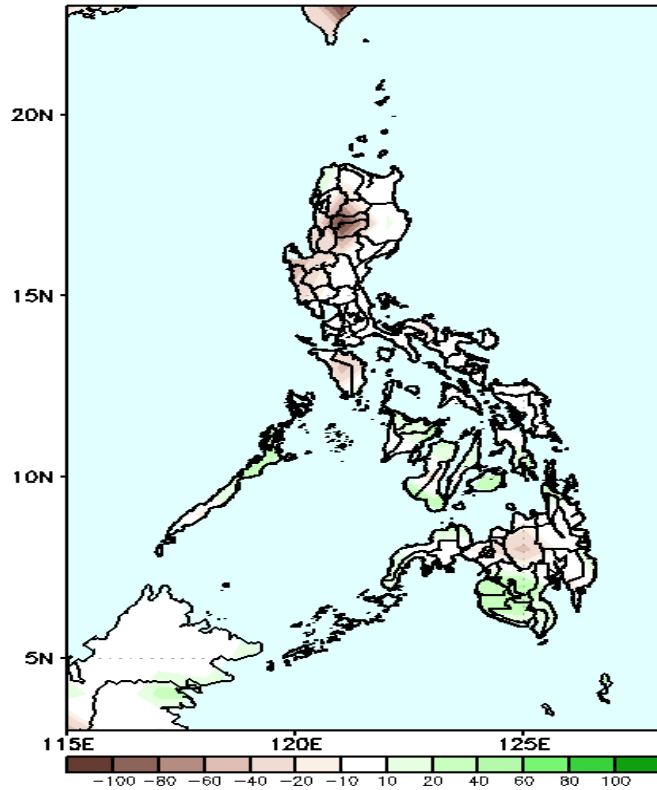
Southwest Monsoon affecting some parts of Western Luzon and Visayas while Easterlies affecting the rest of the country during the forecast period

# Precipitation Anomaly and Exceedance Probability > 25/50 mm

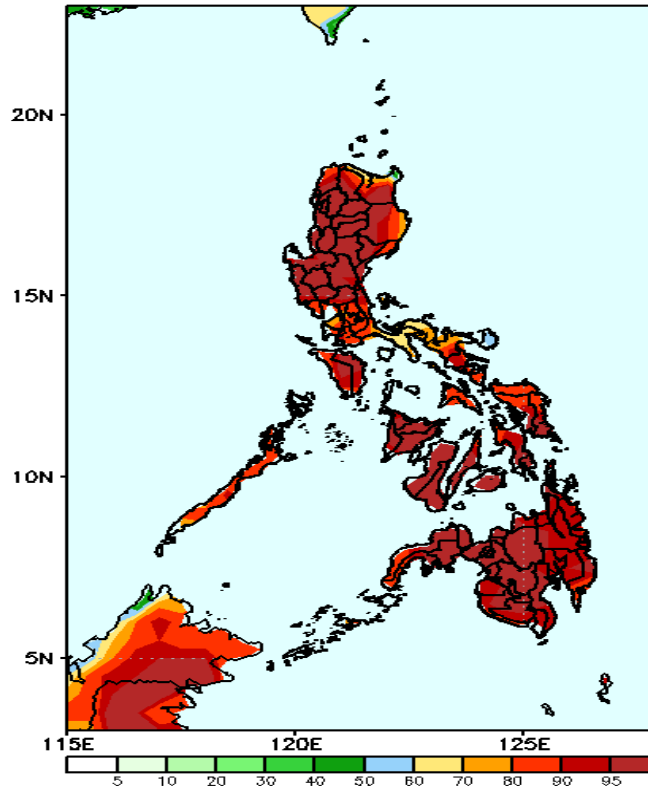


Week 2: Jul 08-14, 2024

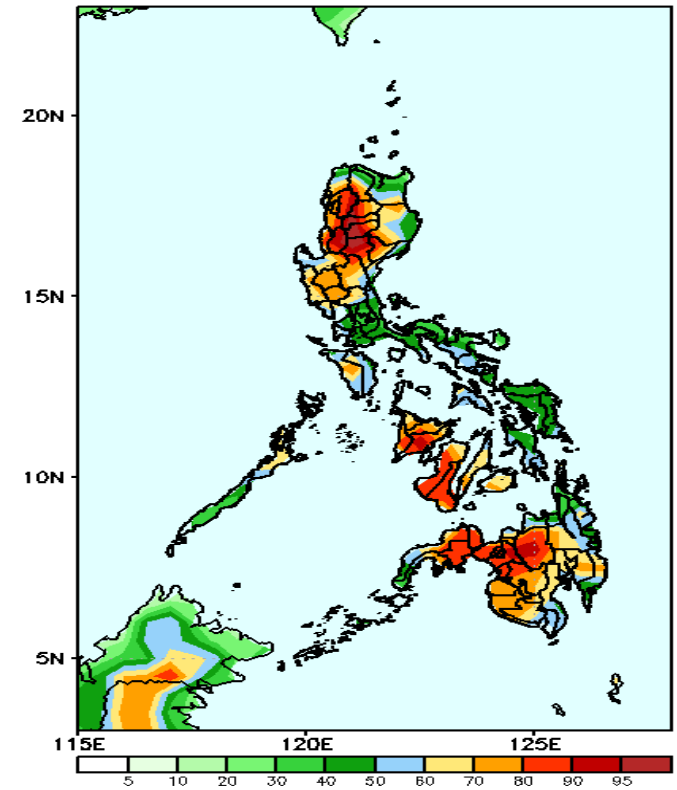
GEFS Week-2 Precip Anomaly  
Valid: 20240708 - 20240714



GEFS Week-2 Exceedance Prob. > 25mm  
Valid: 20240708 - 20240714



GEFS Week-2 Exceedance Prob. > 50mm  
Valid: 20240708 - 20240714



Rainfall deficit of 20-60mm in most parts of country except in some areas in western Luzon and southwestern Mindanao where 10-40mm of rainfall is expected.

## Probability to Exceed 25mm

- High to very high across the country

## Probability to Exceed 50mm

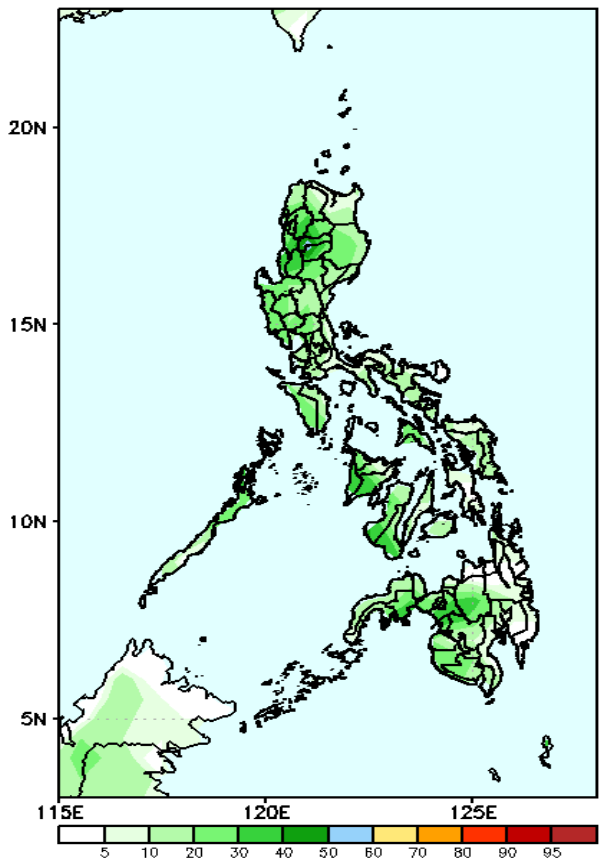
- High to very high over CAR, La Union, Ilocos Sur, Nueva Vizcaya, Bukidnon and Lanao provinces;
- Moderate to high over the rest of the country.

# Exceedance Probability > 100/150/200 mm

- Very high probability
- High Probability
- Moderate Probability
- Low Probability

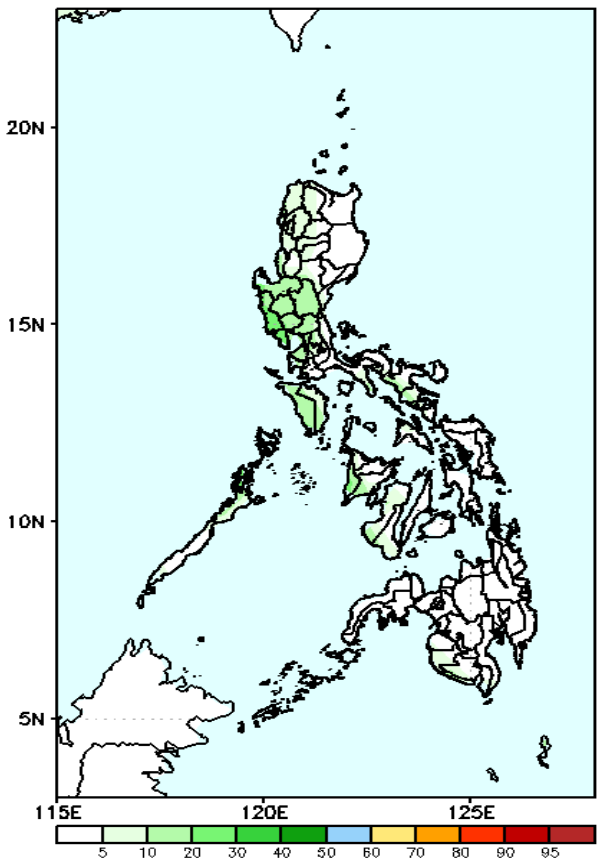
Week 2: Jul 08-14, 2024

GEFS Week-2 Exceedance Prob. > 100mm  
Valid: 20240708 - 20240714



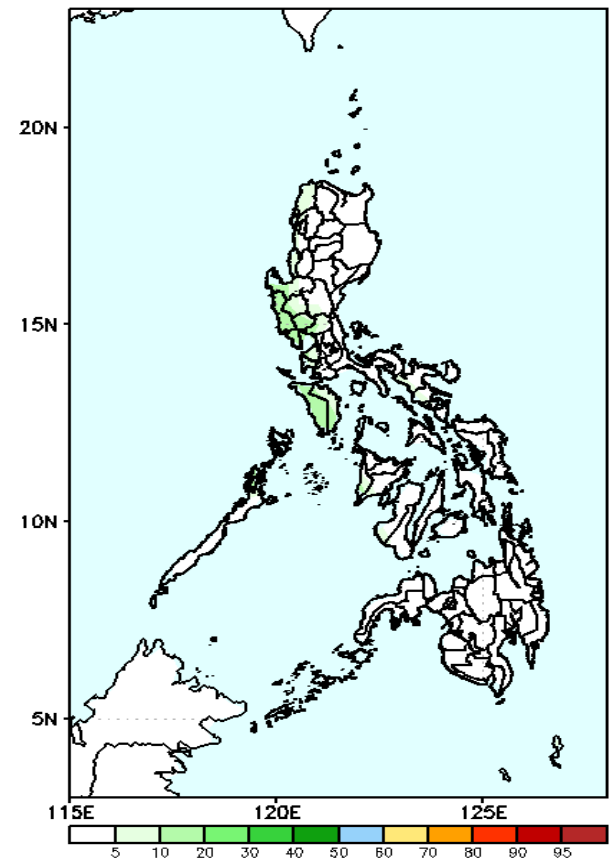
**Probability to Exceed 100mm**  
• Low to moderate across the country.

GEFS Week-2 Exceedance Prob. > 150mm  
Valid: 20240708 - 20240714



**Probability to Exceed 150mm**  
• Low across the country.

GEFS Week-2 Exceedance Prob. > 200mm  
Valid: 20240708 - 20240714

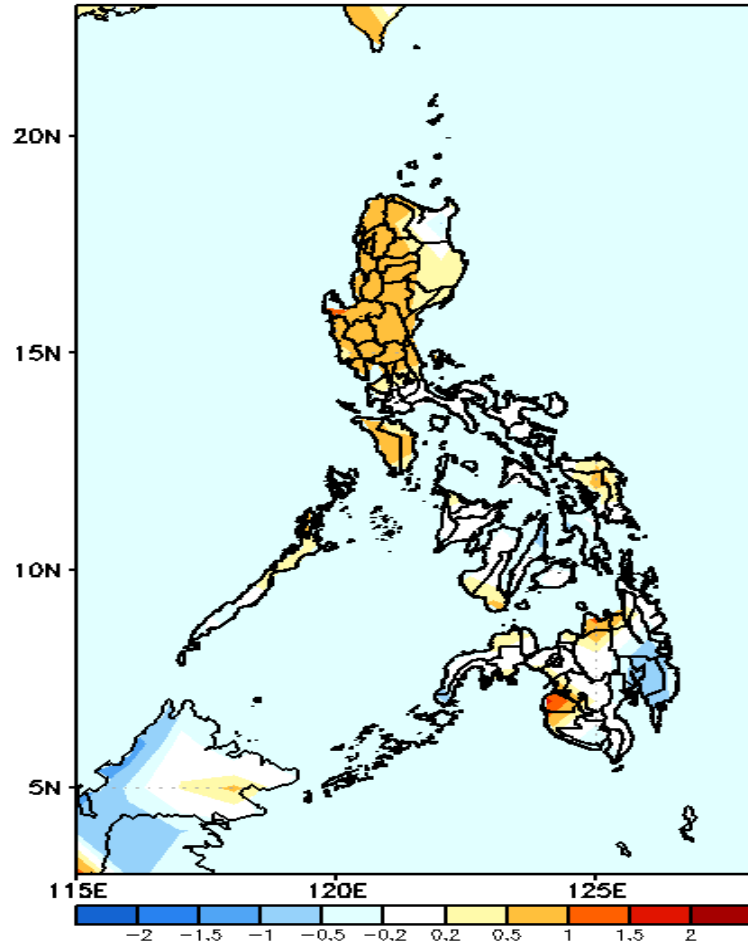


**Probability to Exceed 200mm**  
• Low across the country.



# GEFS Week-1 & 2 Forecasts: T2m Anomaly

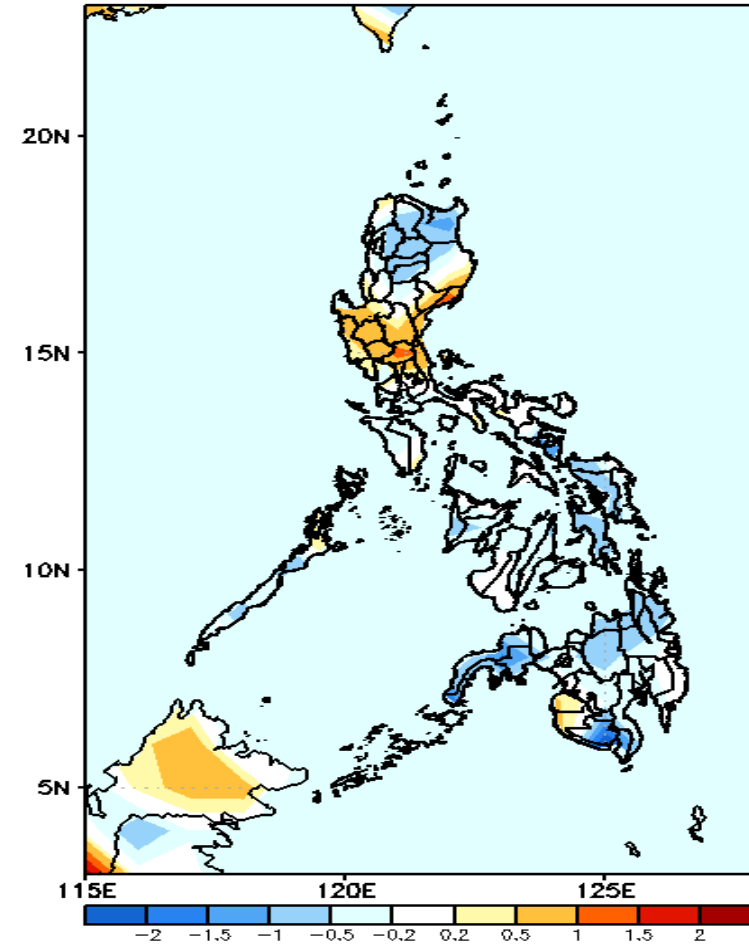
GEFS Week-1 T2m Anomaly  
Valid: 20240701 - 20240707



## 2m Temperature Week 1: Jul 01-07, 2024

Near to slightly warmer than average surface air temperature will likely be experienced in most parts of the country except in Maguindanao (warmer) and Davao Region (slightly cooler temperature).

GEFS Week-2 T2m Anomaly  
Valid: 20240708 - 20240714



## 2m Temperature Week 2: Jul 08-14, 2024

Near to cooler surface air temperature will likely be experienced in most parts of the country except in central Luzon and some areas in eastern Luzon where slightly warmer to warmer than average temperature is expected.